

# Scheduling Information

## FEES:

**Party Rooms:** The fee for the classrooms is \$200.00 for members and \$235.00 for non-members. Use of our larger community room (which holds up to 100 people) is \$300.00 for members, and \$335.00 for non-members.

\*Fees include a 1-hour program plus a 1-hour party\*

**Payment Info:** We require payment two weeks after your reservation is booked. A credit card is required. In the case of damage or misuse of the facilities on the part of the party attendees, the credit card will be charged for damage.

**Cancellations:** Cancellations must be made two weeks before the date of the party in order to receive a refund (minus \$10.00 as a cancellation fee). Cancellations not made in time will not receive a refund.

**Capacity:** Fee includes a maximum of up to 40 people (18 children) in our classrooms and a maximum of 100 people in our larger community room. Any additional children are welcome at a fee of \$8.00 per child. There is no cost for adult guests.

## YOUR RESPONSIBILITIES:

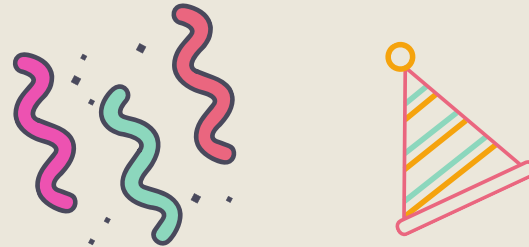
- Provide your own cups, plates, utensils, keeping in mind that the more reusable/eco friendly they are - the better!
- Provide your own decorations, Decorations are limited to tabletop centerpieces, tablecloths and balloons.
- Please clean up afterwards by sweeping any debris and removing trash to the dumpster in the parking lot.

## HOW TO MAKE RESERVATIONS:

- A minimum of two weeks notice is required to schedule a party.
- Contact the Churchville Nature Center at 215-357-4005, between the hours of 10:00AM - 5:00PM, Tuesday through Sunday

**501 CHURCHVILLE LANE  
CHURCHVILLE PA 18966  
(215) 357-4005**

Office Hours:  
Tuesday through Sunday  
10AM to 5PM  
Monday - closed



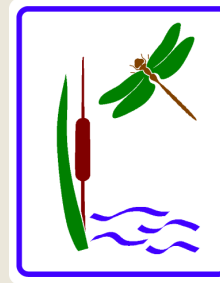
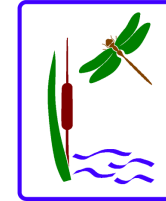
### Bucks County Commissioners

Robert G. Loughery, Chairman  
Charles H. Martin, Vice-Chairman  
Diane M. Ellis Marseglia, LCSW

*The Bucks County Department of Parks and Recreation does not discriminate on the basis of disability in its programs, activities, and facilities.*

# Birthday Parties

For ages 4 and up



**Churchville Nature Center**  
Bucks County Department of  
Parks and Recreation


# Party with Nature!

## TIRED OF THE SAME OLD PARTY CHOICES?

Celebrate your child's birthday with a nature related birthday party. Spend a few hours immersed in the natural world. What could be more fun than getting up close to a snake, searching for strange and exciting insects, or playing in a Native American village, just as they did 500 years ago...



## WE PROVIDE THE FOLLOWING FOR YOUR 2-HOUR BIRTHDAY PARTY

- Your choice of a nature themed  program (listed on the next page) with a fun and knowledgeable Churchville Nature Center educator, AND...
- Your choice of party room for crafts, food, etc. for the remaining hour
- You may schedule the party for any Saturday or Sunday throughout the year, depending on availability. Weekday parties are also available upon request!
- Times for parties are 11:00AM - 1:00PM or 2:00PM - 4:00PM

# Birthday Party Themes

EACH PROGRAM = 1 HOUR



## NATURE AWARENESS

Foraging the trails of the center using our five senses and our imagination is a wonderful experience for energetic party participants. We will look for the inhabitants of the meadow, marsh, pond, and woodland.

## LENAPE NATIVE AMERICAN



Learn about the Lenape lifestyle and try some of the games the Lenape children played. The program will be held in the actual reconstructed Lenape Village on site. Party will be held in our auditorium.



## REPTILE SMILES

This program features live reptiles. Children will see and feel what makes reptiles a fascinating and diverse family of animals. If time allows we may even search the trails for signs of our local reptiles

## AMAZING INSECTS



This program focuses on the amazing world of insects. Children will learn how and where to look for our tiny friends and why they are important to us by going on a nature walk! (Seasonal: April - Oct only)



## RAINFOREST ADVENTURE

This program is very interactive and features activities related to the rainforest. Children will get to create a rainforest using animal cutouts and forest trees. They will get to smell scent in bottles and guess what they are! They will even get a visit from a rainforest animal!



## Party at your house!

We can come to your home for any of our themed parties for 1 hour. The fee for us to come is \$100.00, except for the reptile program, which is \$125.00.

# Goodie Bag for the Birthday child!

**YOUR BIRTHDAY CHILD WILL RECEIVE A GOODIE BAG AS A GIFT FROM THE CHURCHVILLE NATURE CENTER. EACH BAG INCLUDES A VARIETY OF FUN ITEMS SUCH AS STICKERS, TATTOOS, ANIMALS AND SMALL GAMES. YOU CAN PURCHASE ADDITIONAL BAGS FOR THE GUESTS AT YOUR CHILD'S PARTY FOR \$5.00 EACH**



TO SCHEDULE A PARTY CALL  
STEPH CATRAMBONE AT (215) 357-4005 EXT  
5037 OR  
EMAIL  
SACATRAMBONE@BUCKSCOUNTY.ORG